



LIVINGSTONE

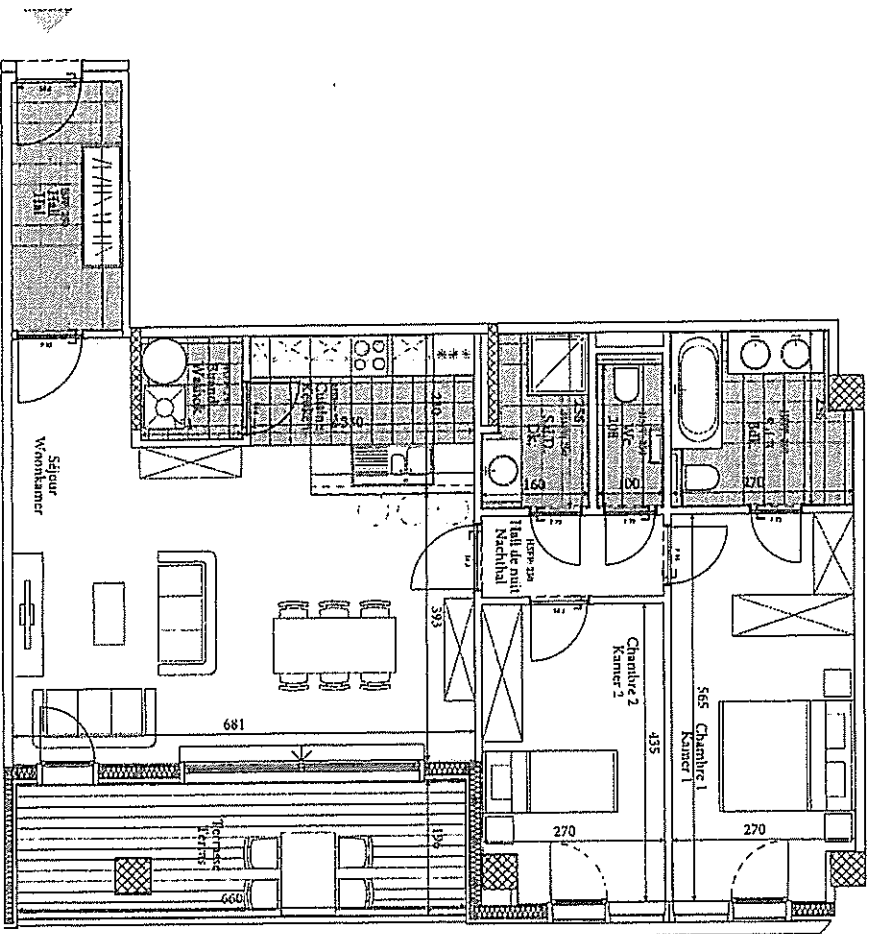
APPARTEMENT B3.1

Verdieping / Etage 3

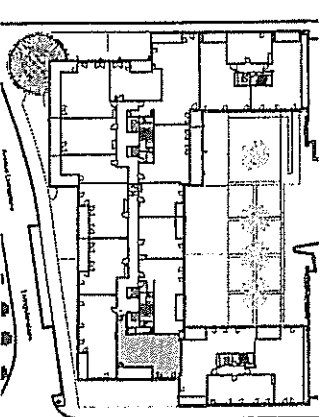
2 Kamers / Chambres

Oppervlakte / Surface: 104.9m²

Terras / Terrasse: 12.9m²



Stede Kuysscha



SCHAAL / ECHELLE:

1:75



CONTACT:

Visit: www.livingstone-brussels.be
Contact: promotie@victoire.be
Tel: +32 (0)2 777 15 10

